



# **Aras AI Assistant**

## **Installation Guide**

*Document #: D-009395*

*Last Modified: 5/14/2025*

# Copyright Information

Copyright © 2025 Aras Corporation. All Rights Reserved.

Aras Corporation  
100 Brickstone Square  
Suite 100  
Andover, MA 01810

**Phone:** 978-806-9400

**Fax:** 978-794-9826

**E-mail:** [support@aras.com](mailto:support@aras.com)

**Website:** <https://www.aras.com>

## Notice of Rights

Copyright © 2025 by Aras Corporation. This material may be distributed only subject to the terms and conditions set forth in the Open Publication License, V1.0 or later (the latest version is presently available at <http://www.opencontent.org/openpub/>).

Distribution of substantively modified versions of this document is prohibited without the explicit permission of the copyright holder.

Distribution of the work or derivative of the work in any standard (paper) book form for commercial purposes is prohibited unless prior permission is obtained from the copyright holder.

Aras Innovator, Aras, and the Aras Corp "A" logo are registered trademarks of Aras Corporation in the United States and other countries.

All other trademarks referenced herein are the property of their respective owners.

## Notice of Liability

The information contained in this document is distributed on an "As Is" basis, without warranty of any kind, express or implied, including, but not limited to, the implied warranties of merchantability and fitness for a particular purpose or a warranty of non-infringement. Aras shall have no liability to any person or entity with respect to any loss or damage caused or alleged to be caused directly or indirectly by the information contained in this document or by the software or hardware products described herein.

# Table of Contents

Send Us Your Comments .....	4
Document Conventions .....	5
<b>1 Overview .....</b>	<b>6</b>
1.1 Prerequisites .....	6
<b>2 Installing Aras Innovator .....</b>	<b>7</b>
2.1 Aras Innovator .....	7
2.2 Confirming the Aras Innovator Installation .....	7
2.3 Installing Aras Update Tool .....	8
<b>3 Installing Aras AI Assistant .....</b>	<b>9</b>
3.1 Notification and Backup .....	9
3.2 Applying the Solution .....	10
3.2.1 <i>Automated Installation Option</i> .....	10
3.2.2 <i>Manual Installation Option</i> .....	12
3.3 Confirming the Application Installation .....	14

## Send Us Your Comments

---

Aras Corporation welcomes your comments and suggestions on the quality and usefulness of this document. Your input is an important part of the information used for future revisions.

- Did you find any errors?
- Is the information clearly presented?
- Do you need more information? If so, where and what level of detail?
- Are the examples correct? Do you need more examples?
- What features did you like most?

If you find any errors or have any other suggestions for improvement, indicate the document title, and the chapter, section, and page number (if available).

You can send comments to us in the following ways:

**Email:**

[support@aras.com](mailto:support@aras.com)

Subject: Aras Innovator Documentation

Or,

**Postal service:**

Aras Corporation

100 Brickstone Square

Suite 100

Andover, MA 01810

Attention: Aras Innovator Documentation

Or,

**FAX:**

978-794-9826

Attn: Aras Innovator Documentation

If you would like a reply, provide your name, email address, address, and telephone number.

If you have usage issues with the software, visit <https://www.aras.com/support/>

# Document Conventions

The following table highlights the document conventions used in the document:

Table 1: Document Conventions

Convention	Description
<b>Bold</b>	Emphasizes the names of menu items, dialog boxes, dialog box elements, and commands. Example: Click <b>OK</b> .
Code	Code examples appear in <code>courier</code> font. It may represent text you type or data you read.
<code>Yellow highlight</code>	Code highlighted in yellow draws attention to the code that is being indicated in the content.
<code>Yellow highlight with red text</code>	Red text highlighted in yellow indicates the code parameter that needs to be changed or replaced.
<i>Italics</i>	Reference to other documents.
<b>Note:</b>	Notes contain additional useful information.
<b>Warning</b>	Warnings contain important information. Pay special attention to information highlighted this way.
Successive menu choices	Successive menu choices may appear with a greater than sign (-->) between the items that you will select consecutively. Example: Navigate to <b>File --&gt; Save --&gt; OK</b> .

# 1 Overview

---

This document provides detailed instructions for the installation of Aras AI Assistant. The steps detailed in this document are intended to allow a novice administrator to install the Aras AI Assistant solution. However, more general knowledge of system administration and Aras Innovator administration is recommended.

The following is the basic sequence of steps to fully install Aras AI Assistant.

1. Install Aras Innovator.
2. Install Aras Update tool.
3. Import Aras AI Assistant

**Note:** The following document is based on a new installation of Aras Innovator. However, the same steps can be used for installing Aras AI Assistant on an existing instance of Aras Innovator.

## 1.1 Prerequisites

Before installing Aras AI Assistant, you must confirm that your system meets the following requirements:

- Aras Innovator Release 27
  - Aras Update Tool
- or*
- Aras Innovator Package Import Export Utilities

If you are using a later version of any of these components, consult Aras Support ([support@aras.com](mailto:support@aras.com)) before installing Aras AI Assistant

## 2 Installing Aras Innovator

---

The first step required to install Aras AI Assistant is to set up the Aras Innovator instance. This section walks through the major steps for setting up your Aras Innovator instance for use with Aras AI Assistant.

### 2.1 Aras Innovator

The first step is to install Aras Innovator. The Aras Innovator CD Image can be obtained by subscribers from the Aras FTP site in the InnovatorLatestRelease folder.

Documentation for installing Aras Innovator can be obtained from the Documentation folder inside the Aras Innovator CD Image.

At the time of release, the versions of Aras Innovator that support this version of Aras AI Assistant are:

- Release 27
- Release 28
- Release 29
- Release 30
- Release 31
- Release 32
- Release 33
- Release 34
- Release 35

If you are using an earlier version of Aras Innovator, upgrade before installing the solution.

If you are using a later version of Aras Innovator, consult Aras Support ([support@aras.com](mailto:support@aras.com)) before installing Aras AI Assistant.

### 2.2 Confirming the Aras Innovator Installation

Use the following steps to check if your Aras Innovator code tree and database meet the minimum requirements to install Aras AI Assistant.

1. Log in to Aras Innovator as an administrator.
2. From the Main Menu select **User Icon → About**.
3. Confirm that the dialog shows the following:
  - Release 27 Build 14.0.15

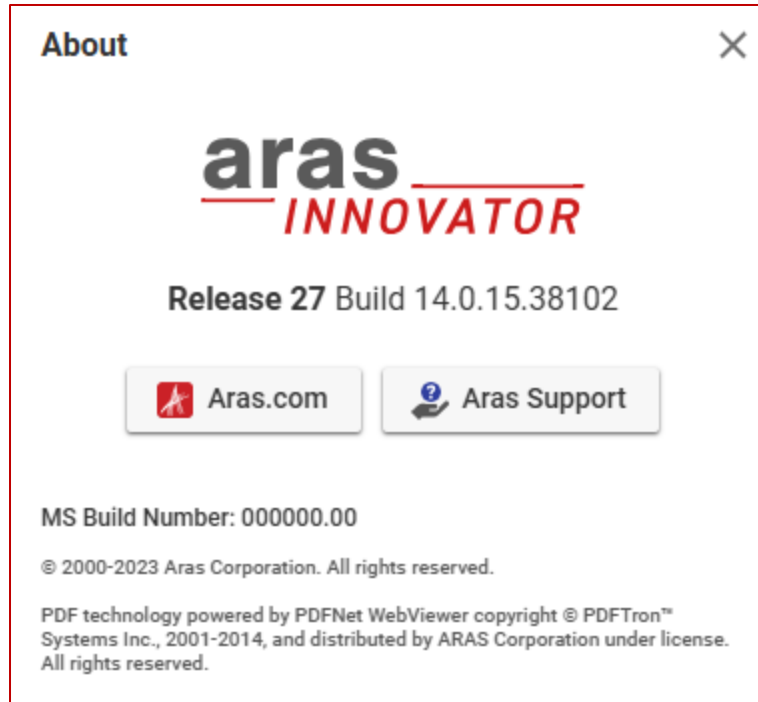


Figure 1.

4. Close the dialog.
5. From the TOC, select **Administration --> Variables**.
6. Confirm that the variables are listed:

VersionMajor	VersionMinor	VersionServiceUpdate
14	0	15

If you do not meet the service pack requirements listed in the previous steps, you should contact Aras to discuss your upgrade options.

## 2.3 Installing Aras Update Tool

Aras AI Assistant is installed using the Aras Update Tool. For instructions on installing this tool refer to the *Aras Update – Installation Guide*.

**Note:** It is also possible to install the Aras AI Assistant solution manually, using the Aras Import tool.

## 3 Installing Aras AI Assistant

### Requirements:

- Aras Innovator Release 27
- Aras Update Tool  
*or*
- Aras Innovator Package Import Export Utilities

### 3.1 Notification and Backup

1. Notify users that the system will be down at a scheduled time, and that they should log out of the system prior to the start of the process.

It is best to give at least a 24-hour notice, as well as a reminder 15 minutes prior to taking the system off-line.

2. Back up the code tree:

The 'Code Tree' refers to files and folders installed to the disk when Aras Innovator was first installed.

The default path for the Code Tree installation would be something similar to:

`C:\Program Files(x86)\Aras\Innovator`

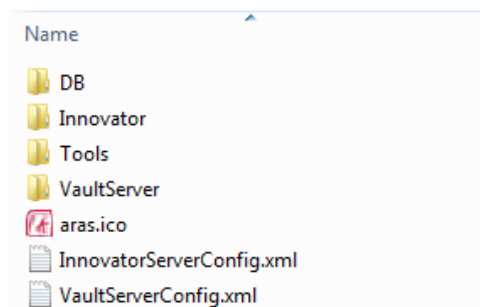


Figure 2.

You can confirm the installation folder with the following steps:

- a. From the Start Menu, select **Start → Setting → Control Panel**.
- b. From the Control Panel, select **Programs and Features**.
- c. Search for the Aras Innovator entry.

The entry should display the physical installation path.

Once you have determined where the code tree is installed, backup the folder and all of its contents.

3. Disconnect all users from the database.

The easiest way to prevent client sessions from committing any further changes to the database is to change the database connection string in the InnovatorServerConfig.xml from "<DB-

Connection...” to <xDB-Connection” and restart the w3svc service (IIS). This expires all sessions and prevents all new connections to the Aras Innovator database through the existing instance.

4. Backup the database.

Place this file in a safe location, as it is necessary to restore from it if the upgrade fails.

5. Enable database connections

After your database backup has completed, you can enable the database connection string in the InnovatorServerConfig.xml by simply changing it from “<xDB-Connection...” to <DB-Connection” and restarting the w3svc service (IIS).

## 3.2 Applying the Solution

It is possible to install Aras AI Assistant using the Automated Installation Option (using Aras Update Tool) or the Manual Installation Option (using the Aras Import tool).

### 3.2.1 Automated Installation Option

1. Download the Aras AI Assistant CD image from the Aras ftp site and unzip the file on the local computer.
2. Enable the Super User login.
3. Launch the **ArasUpdate.exe** file as administrator.

On a default installation, the **ArasUpdate.exe** file can be found in C:\Program Files (x86)\Aras\Aras Update\ directory.

4. Find and expand the Aras AI Assistant package and click **Install**.

Aras Update should download the required package.

**Note:** It is possible to use the Aras Update tool to install a package that has been downloaded manually. For more information, see *Aras Update – User Guide*.

5. After the Download is complete, click the **Install** button.
6. Select the **Aras Innovator Code Tree Updates** and **Aras Innovator Database Updates** options and click the **Next** button.

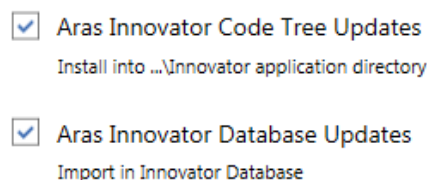


Figure 3.

7. Select the appropriate logging option and click **Next**.

The logging option is used to record the installation attempt and can be used to troubleshoot issues.

8. Input the connection information and click **Next**.

Aras Update

aras UPDATE

Enter the following parameters for each component you are going to install and then click Install button to continue.

✓ Aras Innovator Code Tree Updates

Install Path  
C:\Program Files (x86)\Aras\Innovator\Innovator Browse...

✓ Aras Innovator Database Updates

Server URL  
http://localhost/InnovatorServer

Database  
InnovatorSolutions

Username  
root

Password  
\*\*\*\*\*

Back Next Cancel

Figure 4.

- **Server URL** = The connection URL for Aras Innovator
- **Database** = The target Aras Innovator database
- **Username** = root
- **Password** = Password for “root” login (Default is “innovator”)

9. If the database includes a locale other than the default English, select an optional Language Pack to be included with the installation and click the **Install** button.

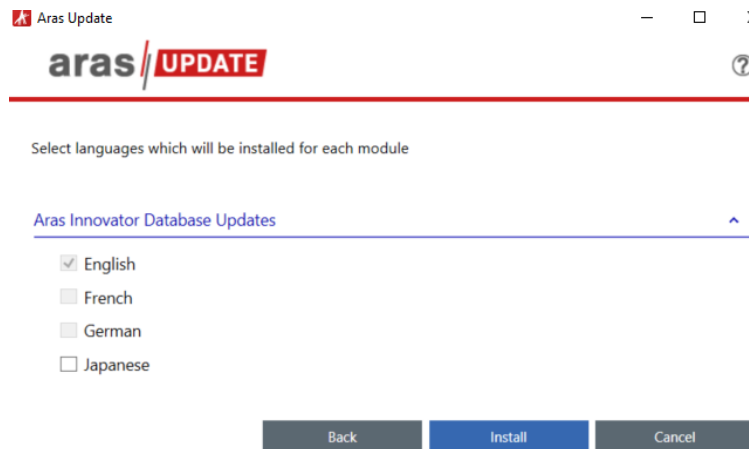


Figure 5.

Aras Update will install everything required for Aras AI Assistant.

10. After the installation is complete, disable the Super User login.

### 3.2.2 Manual Installation Option

1. Download the Aras Update CD image from the Aras ftp site ([ftp://ftp.aras.com/ProgramManagement\\_Releases/](ftp://ftp.aras.com/ProgramManagement_Releases/)), and unzip the file on the local computer.
2. Copy the `\files\Innovator` folder to the root of your install directory, overwriting the existing `\Innovator` folder and all its contents.

It is recommended that this step be performed by an administrator on the server.

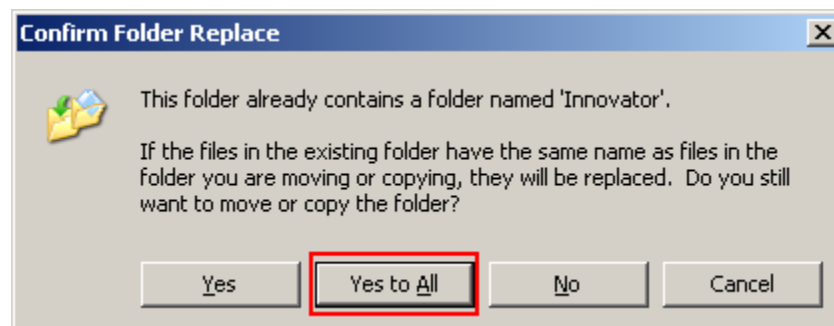


Figure 6.

3. Increment the `filesRevision` setting in the `\Client\web.config` file.
  - a. Navigate to the `\Innovator\Client\` directory and open the `web.config` file for editing.
  - b. Change the value of the `filesRevision` attribute. The value should be changed from `std` to 2, 3, 4, etc

...

```
</runtime>
<キャッシングModule moduleEnabled="true" filesRevision="2" />
</configuration>
```

- c. Save the changes to the `web.config` file and close it.
4. Import the database package with the Package Import Export Utilities For more information about using this tool, refer to the *Aras Innovator 14.0 - Package Import Export Utilities* documentation.
  - a. You need to enable the “Super User” login to perform this step.
  - b. Browse to the `\PackageImportExportUtilities\Import\` folder and run the `Import.exe` file.

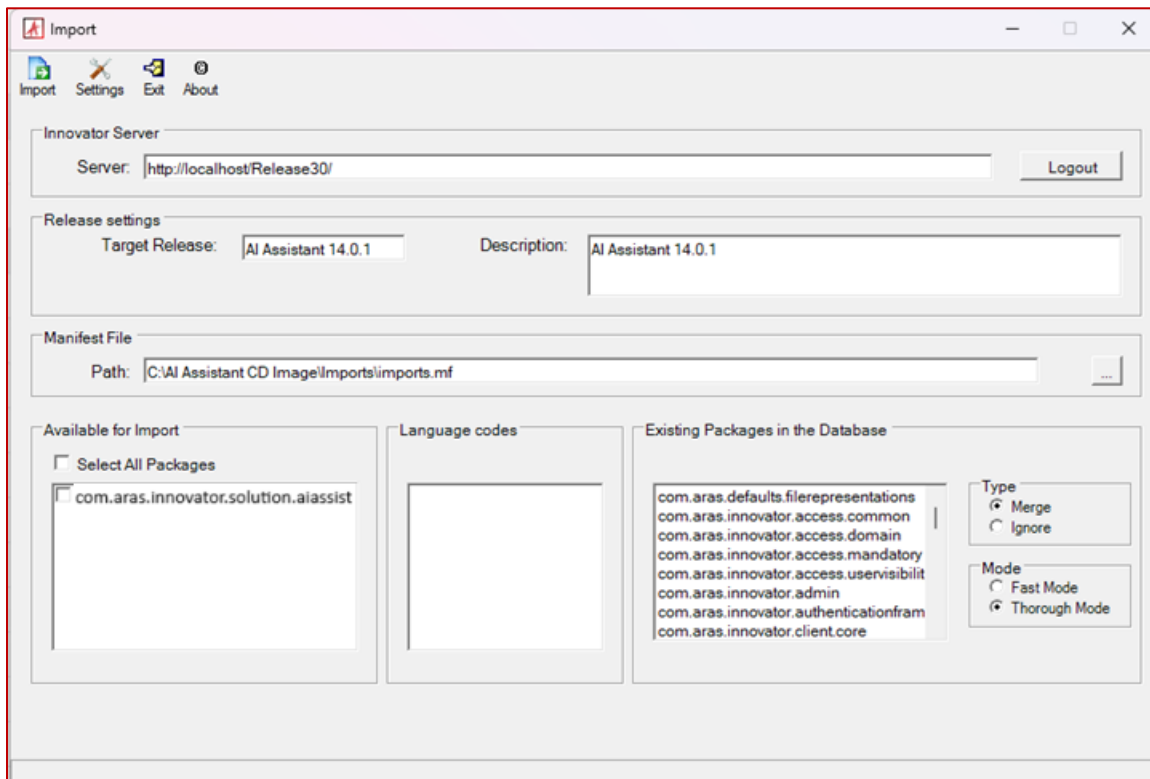


Figure 7.

- c. Input the connection information
  - **Server** = The connection URL for Aras Innovator
  - **Database** = The target Aras Innovator database
  - **Username** = root
  - **Password** = Password for “root” login (Default is “innovator”)
  - **Target Release** = AI Assistant 14.0.1
  - **Description** = AI Assistant 14.0.1
  - **Manifest File Path** = The manifest is found in the folder `\imports\imports.mf`
  - Available for Import = Check
    - "com.aras.innovator.solution.aiassistant"
  - **Type** = Merge

- **Mode** = Thorough Mode
- d. Click on the **Import** button.

**Note:** Remember to disable the “Super User” login once complete. This login should not be enabled in production.

### 3.3 Confirming the Application Installation

Use the following steps to confirm if the database has imported the Aras AI Assistant solution.

1. Log in to Aras Innovator as an administrator
2. From the TOC, select **Administration --> Variables**.
3. Confirm that one of the following sets of variables are listed:

Name	Value
AI Assistant	14.0.1

If any part of this installation fails, revert to your backups and contact Aras Support at [support@aras.com](mailto:support@aras.com).